

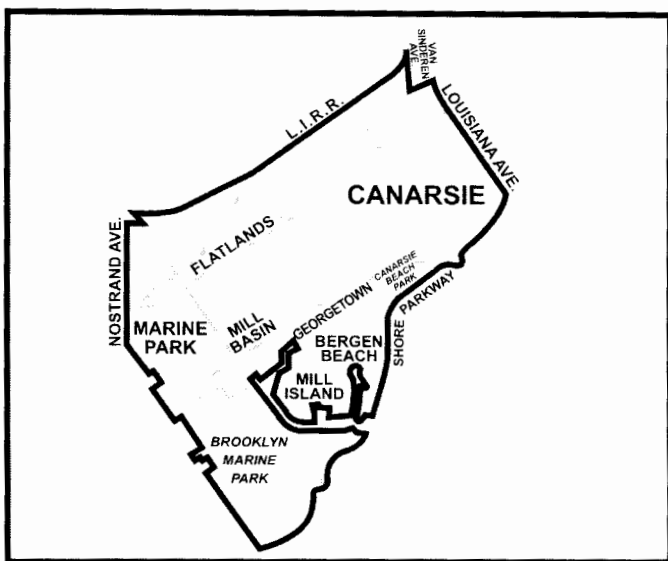
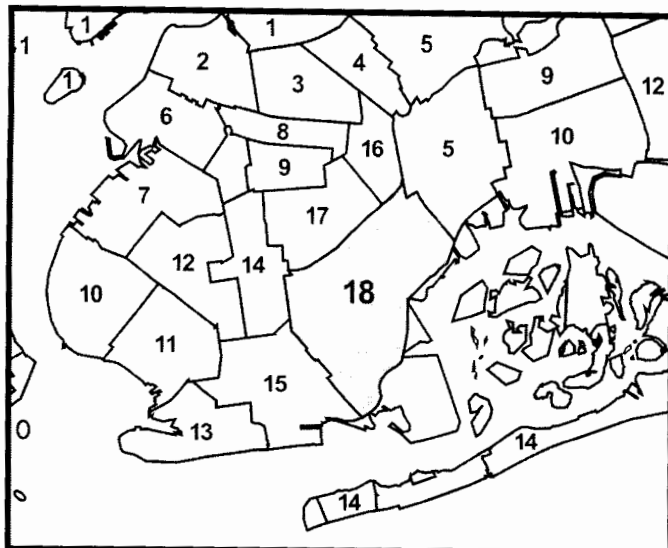
BROOKLYN COMMUNITY DISTRICT 18

TOTAL POPULATION	1980	1990	2000
Number	169,093	162,428	194,653
% Change	—	-3.9	19.8

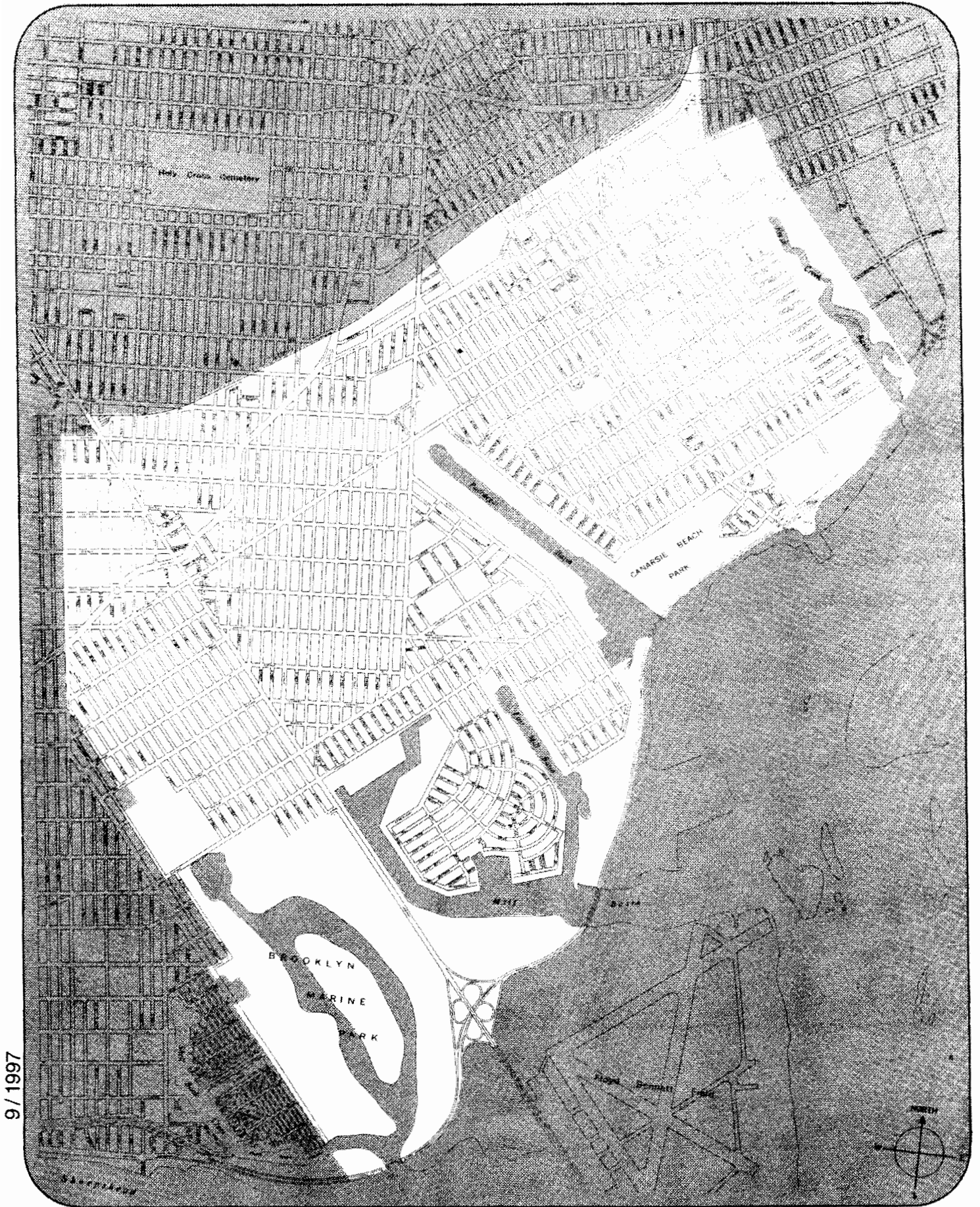
VITAL STATISTICS	2000	2003
Births: Number	2,587	2,594
Rate per 1000	13.3	13.3
Deaths: Number	1,266	1,234
Rate per 1000	6.5	6.3
Infant Mortality: Number	23	23
Rate per 1000	8.9	8.9

INCOME SUPPORT	2000	2005
Public Assistance (AFDC, Home Relief)	6,225	5,084
Supplemental Security Income	6,149	6,074
Medicaid Only	8,902	33,198
Total Persons Assisted	21,276	44,356
Percent of Population	10.9	22.8

TOTAL LAND AREA	
Acres:	6,100.5
Square Miles:	9.5



	Lots	Lot Area	
		Sq. Ft. (000)	%
1- 2 Family Residential	30,166	77,255.0	37.8
Multi-Family Residential	2,313	13,028.0	6.4
Mixed Resid. / Commercial	842	2,573.9	1.3
Commercial / Office	563	7,585.9	3.7
Industrial	146	5,993.4	2.9
Transportation / Utility	199	3,770.6	1.8
Institutions	186	7,944.3	3.9
Open Space / Recreation	88	75,883.4	37.1
Parking Facilities	160	1,582.2	0.8
Vacant Land	723	7,919.6	3.9
Miscellaneous	65	1,120.4	0.6
Total	35,451	204,656.8	100.0



9/1997

**Table PL P-103: Total Population by Mutually Exclusive Race and Hispanic Origin
and Total Housing Units
New York City Community Districts, 1990 and 2000**

Brooklyn Community District 18	1990		2000		Change 1990-2000	
	Number	Percent	Number	Percent	Number	Percent
Total Population	162,428	100.0	194,653	100.0	32,225	19.8
Nonhispanic of Single Race:	-	-	-	-	-	-
White Nonhispanic	112,921	69.5	67,303	34.6	(45,618)	-40.4
Black/African American Nonhispanic	31,649	19.5	98,714	50.7	67,065	211.9
Asian or Pacific Islander Nonhispanic	5,705	3.5	7,203	3.7	1,498	26.3
American Indian and Alaska Native Nonhispanic	224	0.1	254	0.1	30	13.4
Some Other Race Nonhispanic	250	0.2	824	0.4	574	229.6
Nonhispanic of Two or More Races	-	-	4,469	2.3	-	-
Hispanic Origin	11,679	7.2	15,886	8.2	4,207	36.0
Population Under 18 Years	35,550	100.0	52,476	100.0	16,926	47.6
Nonhispanic of Single Race:	-	-	-	-	-	-
White Nonhispanic	20,928	58.9	12,936	24.7	(7,992)	-38.2
Black/African American Nonhispanic	9,692	27.3	30,962	59.0	21,270	219.5
Asian or Pacific Islander Nonhispanic	1,415	4.0	1,847	3.5	432	30.5
American Indian and Alaska Native Nonhispanic	65	0.2	91	0.2	26	40.0
Some Other Race Nonhispanic	113	0.3	266	0.5	153	135.4
Nonhispanic of Two or More Races	-	-	1,328	2.5	-	-
Hispanic Origin	3,337	9.4	5,046	9.6	1,709	51.2
Population 18 Years and Over	126,878	100.0	142,177	100.0	15,299	12.1
Nonhispanic of Single Race:	-	-	-	-	-	-
White Nonhispanic	91,993	72.5	54,367	38.2	(37,626)	-40.9
Black/African American Nonhispanic	21,957	17.3	67,752	47.7	45,795	208.6
Asian or Pacific Islander Nonhispanic	4,290	3.4	5,356	3.8	1,066	24.8
American Indian and Alaska Native Nonhispanic	159	0.1	163	0.1	4	2.5
Some Other Race Nonhispanic	137	0.1	558	0.4	421	307.3
Nonhispanic of Two or More Races	-	-	3,141	2.2	-	-
Hispanic Origin	8,342	6.6	10,840	7.6	2,498	29.9
Total Population	162,428	100.0	194,653	100.0	32,225	19.8
Under 18 Years	35,550	21.9	52,476	27.0	16,926	47.6
18 Years and Over	126,878	78.1	142,177	73.0	15,299	12.1
Total Housing Units	60,931	-	69,036	-	8,105	13.3

Race categories are from the 2000 Census and are not strictly comparable with categories used in 1990.

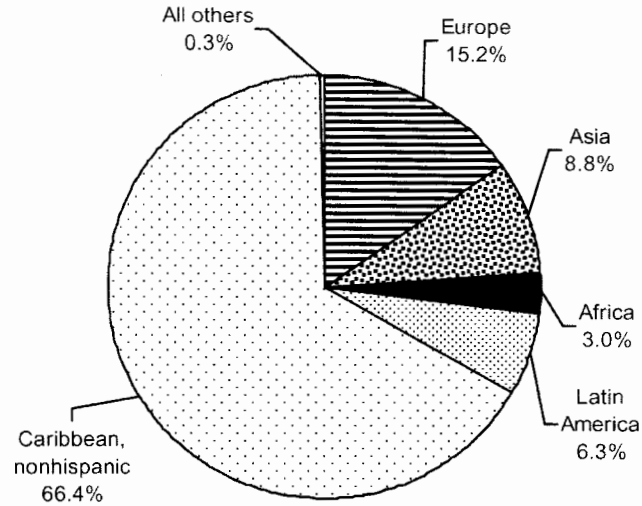
Source: U.S. Census Bureau, 2000 Census PL File and SF1 and 1990 Census STF1
Population Division - NYC Department of City Planning (Oct 2001)

**Demographic Profile - New York City Community Districts
2000 Census SF1**

Brooklyn Community District 18	Number	Percent
Total Population	194,653	100.0
White Nonhispanic	67,303	34.6
Black Nonhispanic	98,714	50.7
Asian and Pacific Islander Nonhispanic	7,203	3.7
Other Nonhispanic	1,078	0.6
Two or More Races Nonhispanic	4,469	2.3
Hispanic Origin	15,886	8.2
Female	105,731	54.3
Male	88,922	45.7
Under 5 years	13,488	6.9
5 to 9 years	14,990	7.7
10 to 14 years	15,218	7.8
15 to 19 years	13,956	7.2
20 to 24 years	12,691	6.5
25 to 44 years	58,360	30.0
45 to 64 years	44,156	22.7
65 years and over	21,794	11.2
18 years and over	142,177	73.0
In households	192,734	99.0
In family households	174,058	89.4
Householder	49,982	25.7
Spouse	31,321	16.1
Own child under 18 years	45,329	23.3
Other relatives	42,761	22.0
Nonrelatives	4,665	2.4
In nonfamily households	18,676	9.6
Householder	16,016	8.2
Householder 65 years and over living alone	5,066	2.6
Nonrelatives	2,660	1.4
In group quarters	1,919	1.0
Total Households	65,998	100.0
Family households	49,982	75.7
Married-couple family	31,321	47.5
With related children under 18 years	16,835	25.5
Female householder, no husband present	15,068	22.8
With related children under 18 years	9,640	14.6
Male householder, no wife present	3,593	5.4
With related children under 18 years	1,668	2.5
Nonfamily households	16,016	24.3
Households with one or more persons 65 years and over	16,185	24.5
Persons Per Family	3.39	-
Persons Per Household	2.92	-
Total Housing Units	69,036	-
Occupied Housing Units	65,998	100.0
Renter occupied	29,776	45.1
Owner occupied	36,222	54.9
By Household Size:		
1 person household	13,903	21.1
2 person household	17,386	26.3
3 person household	13,111	19.9
4 person household	11,067	16.8
5 persons and over	10,531	16.0
By Age of Householder:		
15 to 24 years	1,748	2.6
25 to 44 years	26,908	40.8
45 to 64 years	24,798	37.6
65 years and over	12,544	19.0

**Foreign-born Population
Census 2000
Brooklyn Community District 18**

Foreign-born by Area of Origin



CD foreign-born = 72,020

Foreign-born as a percent of total population = 37.0 %

**Foreign-born Rank Ordered
by Country of Birth**

	NUMBER	PERCENT
TOTAL, Foreign-born	72,020	100.0
Haiti	13,982	19.4
Jamaica	13,929	19.3
Trinidad and Tobago	5,873	8.2
Guyana	5,686	7.9
Barbados	2,592	3.6
Italy	1,977	2.7
China*	1,875	2.6
Russia	1,762	2.4
Poland	1,530	2.1
Ukraine	1,433	2.0
All Others	21,381	29.7

*China includes the Mainland, Hong Kong and Taiwan

**Language Proficiency
Census 2000
Brooklyn Community District 18**

	Number	Percent
Total Population 5 Years and Over	181,462	100.0
Proficient in English	159,961	88.2
Not Proficient in English	21,501	11.8
Not Proficient in English	21,501	100.0
Language Spoken at Home:		
French (incl Patois, Cajun, French Creole)	7,903	36.8
Spanish or Spanish Creole	3,811	17.7
Russian	2,501	11.6
Chinese	1,676	7.8
Italian	1,358	6.3
Hebrew	658	3.1
Yiddish	482	2.2
Korean	388	1.8
Polish	379	1.8
Greek	282	1.3
Arabic	248	1.2
African Languages	225	1.0
Urdu	222	1.0
Tagalog	131	0.6
Hungarian	117	0.5
All Others	1,120	5.2

GEOGRAPHIC REPORT FOR THE FISCAL YEAR 2006 ADOPTED CAPITAL BUDGET
(\$ IN THOUSANDS)

COMMUNITY BOARD DISTRICT 18, BROOKLYN

BUDGET LINE	TITLE	TOTAL APPROPRIATION AS OF 5/31/05		FY2006 ADOPTED CAP BUDGET	FY2007	THREE YEAR PROGRAM		REQUIRED TO COMPLETE
						FY2008	FY2009	
HB-535	RECONST & STRUCT REHAB EDGE AVE R & 40TH ST, BROOKLYN	9,805 (CN) 5,884 (S)		0 (CN) 0 (S)	0 (CN) 0 (S)	0 (CN) 0 (S)	0 (CN) 0 (S)	0 (CN) 0 (S)
HB-1022	BRIDGE REHABILITATION, FLATBUSH AVENUE, ETC., BROOKLYN	9,111 (CN)		0 (CN)	0 (CN)	0 (CN)	0 (CN)	0 (CN)
HB-1023	BRIDGE REHABILITATION, MILL BASIN BRIDGE, ETC., BROOKLYN	32,528 (CN) 0 (F)	22,076 (CN) 0 (F)	4,400 (CN) 0 (F)	56,000 (CN) 95,583 (F)	0 (CN) 0 (F)	0 (CN) 0 (F)	0 (CN) 0 (F)
HB-1024	BRIDGE REHABILITATION, BELT PARKWAY OVER PARKDEGAT BASIN, BROOKLYN	34,303 (CN) 0 (F) 10,125 (S)	15,659 (CN) 0 (F) 0 (S)	60,400 (CN) 54,000 (F) 0 (S)	0 (CN) 0 (F) 0 (S)	0 (CN) 0 (F) 0 (S)	0 (CN) 0 (F) 0 (S)	0 (CN) 0 (F) 0 (S)
HB-1072	RECONSTRUCTION BELT SHORE PARKWAY/FRESH CREEK BIN 2-23150-9, BROOKLYN	17,650 (CN) 5,000 (F) 2,000 (S)	0 (CN) 0 (F) 0 (S)	24,723 (CN) 28,545 (F) 0 (S)	0 (CN) 0 (F) 0 (S)	0 (CN) 0 (F) 0 (S)	0 (CN) 0 (F) 0 (S)	0 (CN) 0 (F) 0 (S)
HB-1091	RECONSTRUCTION OF THE BELT PARKWAY BRIDGE OVER ROCKAWAY PKWY, BROOKLYN	5,009 (CN) 0 (F)	0 (CN) 0 (F)	0 (CN) 0 (F)	12,599 (CN) 20,000 (F)	0 (CN) 0 (F)	0 (CN) 0 (F)	0 (CN) 0 (F)
HD-158	NEHEMIAH PROGRAM, ASSOC. COSTS, BROOKLYN AND THE BRONX	40,327 (CN)	1,547 (CN)	0 (CN)	0 (CN)	0 (CN)	0 (CN)	0 (CN)
HD-161	SPRING CREEK, ASSOC. COSTS, BROOKLYN	23,868 (CN)	0 (CN)	0 (CN)	0 (CN)	0 (CN)	0 (CN)	0 (CN)
HW-C032	KINGS HIGHWAY, LANDSCAPING AND LIGHTING, BROOKLYN	100 (CN)	0 (CN)	0 (CN)	0 (CN)	0 (CN)	0 (CN)	0 (CN)
HW-C614	RECONSTRUCTION OF BERGEN AVE & STS IN VIC OF AVE T & E71, BROOKLYN	2,500 (CN)	0 (CN)	0 (CN)	0 (CN)	0 (CN)	0 (CN)	0 (CN)
HW-613	RECONSTRUCTION OF FARRAGUT ROAD, BROOKLYN	8,765 (CN) 7 (F)	0 (CN) 0 (F)	0 (CN) 0 (F)	0 (CN) 0 (F)	0 (CN) 0 (F)	0 (CN) 0 (F)	0 (CN) 0 (F)
HW-614	RECONSTRUCTION OF BERGEN AVE & STS IN VIC OF AVE T & E71, BKLYN	32,481 (CN)	0 (CN)	0 (CN)	18,501 (CN)	0 (CN)	0 (CN)	0 (CN)
HW-636	RECONSTRUCTION, AVENUE J FROM DARILL RD. TO FLATLANDS AVENUE, BROOKLYN	5,238 (CN) 8,097 (F) 491 (F)	0 (CN) 0 (F) 0 (F)	0 (CN) 0 (F) 0 (F)	0 (CN) 0 (F) 0 (F)	0 (CN) 0 (F) 0 (F)	0 (CN) 0 (F) 0 (F)	0 (CN) 0 (F) 0 (F)
HW-688	RECONSTRUCTION, PARKDEGAT 1ST TO 15TH STREETS, BROOKLYN	4,789 (CN)	0 (CN)	0 (CN)	0 (CN)	0 (CN)	0 (CN)	0 (CN)
HW-855	RECONSTRUCT EAST 108TH STREET FROM SEAVIEW TO FLATLANDS AVE., BROOKLYN	219 (CN)	1,003 (CN)	0 (CN)	0 (CN)	6,134 (CN)	0 (CN)	0 (CN)
LB-C003	SITE ACQUISITION, CONSTRUCTION OF NEW CANARSIE BRANCH LIB, BROOKLYN	100 (CN)	0 (CN)	0 (CN)	0 (CN)	0 (CN)	0 (CN)	0 (CN)
P-C077	RECONSTRUCTION OF MARINE PARK, BROOKLYN	7,222 (CN) 1,193 (S)	0 (CN) 0 (S)	0 (CN) 0 (S)	0 (CN) 0 (S)	0 (CN) 0 (S)	0 (CN) 0 (S)	0 (CN) 0 (S)
P-77	REHABILITATION OF PARK BUILDING, MARINE PARK	CP	7,353 (CN) 57 (S)	0 (CN) 0 (S)	0 (CN) 0 (S)	0 (CN) 0 (S)	0 (CN) 0 (S)	CP
P-1130	CONSTRUCT AND RECONSTRUCT SHORE PKWY BIKE PATHS, BROOKLYN	CP	12,544 (CN) 0 (F) 0 (S)	8 (CN) 0 (F) 0 (S)	0 (CN) 0 (F) 0 (S)	0 (CN) 0 (F) 0 (S)	0 (CN) 0 (F) 0 (S)	CP
P-1241	RECONSTRUCTION, CANARSIE PARK, BROOKLYN	0 (CN)	600 (CN)	0 (CN)	0 (CN)	0 (CN)	0 (CN)	0 (CN)
S-199	CONSTRUCTION, GARAGE, SANITATION DISTRICT 17/18, BROOKLYN	26,256 (CN)	0 (CN)	0 (CN)	0 (CN)	0 (CN)	0 (CN)	0 (CN)
S-205	CONSTRUCTION, NEW BORO. REPAIR SHOP FOR BROOKLYN AND QUEENS	17,328 (CN)	0 (CN)	0 (CN)	0 (CN)	0 (CN)	0 (CN)	0 (CN)

FOR ADDITIONAL INFORMATION ON EACH PROJECT, REFER TO PART 1 OF THE ADOPTED CAPITAL BUDGET
PAGE: 231C

GEOGRAPHIC REPORT FOR THE FISCAL YEAR 2006 ADOPTED CAPITAL BUDGET
(\$ IN THOUSANDS)

COMMUNITY BOARD DISTRICT 18, BROOKLYN

BUDGET LINE	TITLE	TOTAL APPROPRIATION AS OF 5/31/05	FY2006 ADOPTED CAP BUDGET	FY2007	THREE YEAR PROGRAM FY2008	FY2009	REQUIRED TO COMPLETE
SE-767	STORM SEWER IN GATEWAY ESTATES, ETC. BROOKLYN	17,782 (CM)	0 (CM)	0 (CM)	0 (CM)	0 (CM)	0 (CM)
SE-768	SANITARY SEWER IN GATEWAY ESTATES, ETC. BROOKLYN	13,008 (CX)	0 (CX)	0 (CX)	0 (CX)	0 (CX)	0 (CX)



MICHAEL R. BLOOMBERG

Mayor

MARTY MARKOWITZ

Borough President

SAUL NEEDLE

Chairperson

DOROTHY TURANO

District Manager

COMMUNITY BOARD NO. 18

5715 AVENUE H – SUITE 1D • BROOKLYN, NEW YORK 11234-1999

TELEPHONE (718) 241-0422

TOLL FREE 1-800-564-5127

FAX (718) 531-3199

email:bkbrd18@optonline.net

STATEMENT OF NEEDS AND PRIORITIES

FISCAL YEAR 2007

Within the boundaries of Community Board #18 are many communities that comprise the “southern tier” of Brooklyn which can be classified as middle income neighborhoods with a solid tax base. Jamaica Bay, one of the largest remaining coastal ecosystems in the New York City area and portions of the Gateway National Park and Preserve dot the landscape.

The communities that comprise Community Board #18 are truly representative of the city as a whole. These communities must be maintained in order to attract and keep families, business, and industry in the city. Only through a comprehensive program of improvement and long-range planning can we attempt to fulfill these planning goals. Every effort must be made by the city to grant and, hopefully, exceed our Capital and Expense Budget requests, and recognize the priorities that we have attached to these funding recommendations. Unfortunately, at the present funding level only the basic and essential facilities and services can be maintained.

The Board urges parity in the funding mechanism to Community Boards. Several Manhattan Community Boards receive greater funding as demonstrated by a recent report issued by Manhattan Assemblyman Scott Stringer. This practice, once again, demonstrates a Manhattan centrist mentality denying outer borough Community Boards from hiring planners and consultants to provide the necessary zoning expertise and resources for effective neighborhood planning. The piecemeal rezoning efforts by the Department of City Planning is just what this administration is all about piecemeal efforts to deal with major problems unless those problems exist across the east river...in Manhattan. It is the sense of this Board that the entire Borough be rezoned to create a rational zoning plan that reflects natural residential, commercial, and manufacturing boundaries. A zoning text that would eliminate the need for the Board of Standard and Appeals. The Board of Standard and Appeals has been misused to circumvent existing antiquated zoning text, and to reflect their own opinions to alter the zoning on recently rezoned parcels without regard to the unique character of residential neighborhoods. We approach the monumental task of rezoning with trepidation since it has been our experience that the Board of Standards and Appeals does not uphold those efforts.

C.B.#18 - STATEMENT OF NEEDS AND PRIORITIES - FISCAL YEAR 2007

We urge the Community Assistance Unit of the Mayor's Office to continue its strong working relationship between their centralized staff and our Community Board to assist in the resolution of problems and issues. We commend their expansion of internet access between community boards, city agencies, elected officials, and area residents. We are bewildered, however, as to why the agency has not prepared an updated computer generated Street Activity Permit Application form that does not require the use of a typewriter. We urge increased computer support programs within the Community Assistance Unit to keep-in-step with the constant spiraling technological advances. The need for computer support services is becoming even more essential as the use of the internet for conducting government business increases.

The May 19th sinage of City Council Introduction 174-A into law is a victory and a milestone for Community Boards and for all New Yorkers. The legislation amended the City Charter to require the Department of Information Technology and Telecommunications (DoITT) to provide electronic data, broken down by community district, on complaints collected by the 311 Citizen Service Center. This Charter Amendment is an important step toward sharing 311 data, but we still need to be included in the city's complaint collection, tracking, and resolution processes. Only through personal interaction and sharing of information between the Community Board and city agencies can we enhance city service delivery and coordinate efforts to improve the quality of life for our residents.

Through the persistent efforts of our local elected officials and the Community Board, in a partnership with the community -- Civic and Block Associations, Parent/Teacher Associations, Religious Groups, Merchant Organizations, and Community Based Service Providers -- we continue to develop an agenda toward addressing the special needs of the communities and enhance the delivery of services as well as the maintenance and reconstruction of our infrastructure.

The communities of Board #18 have been identified as important, viable areas that provide our city with a solid tax base. There are many shopping centers and commercial strips that are viable and thriving throughout the Board including Kings Plaza, a large regional shopping complex.

Throughout our communities there exists a network of volunteer civic, parent, religious, and service organizations working in a harmonious atmosphere of partnership with our elected officials to enhance the quality of life for all of our residents. It is that spirit of commitment and activity that makes the communities of Community Board #18 perhaps some of the finest places in which to live and raise a family.

As the communities age, it becomes increasingly essential that the Capital Budget needs of the area be met if we are to maintain public structures and facilities at acceptable levels. Emphasis must be placed on long-term infrastructure rebuilding as well as short-range improvements suggested by the Community Board to the appropriate agencies.

As the age of our basic one and two family homes advances, we encourage homeowners to do major home improvements using low-interest home equity loans that are available from area banks.

Community Board 18's housing stock basically consists of well maintained owner occupied one and two family homes with scattered co-op and condominium development. Additionally, there are several high-rise buildings and three New York City Housing Projects (Bayview, Breukelen

C.B.#18 - STATEMENT OF NEEDS AND PRIORITIES - FISCAL YEAR 2007

and Glenwood) within our boundaries. The objectives of our housing priorities are to support continued development of vacant land suitable for housing with designs consistent with the residential nature and character of the communities. Our goals continue to be achieved by ongoing new development and home improvement incentives offered within the communities. The current private home construction in Georgetowne, the planned private home construction in the waterfront communities of Bergen Beach and Mill Island, vividly demonstrate our commitment to support new construction that is in consonance with the surrounding neighborhoods.

We are concerned about efforts to create "Retail Subdistricts" throughout the City. Our communities do not need the added heavy commercial burden on our streets and in our residential neighborhoods. Additionally, the tenuous economic condition of our local "strip" shopping centers, as well as our network of "Mom & Pop" stores, could not endure the advancement of large discount mega-stores. We continue to work with merchant groups to develop strategies for commercial revitalization programs. "Strip" shopping is vital to the economic stability of our communities, and special attention must now be paid to their well-being.

The Community Board vehemently opposes the further commercialization of Flatbush Avenue, south of Avenue U/north of Gateway National Recreation Area, and respectfully urges the Department of Business Services to cease and desist their efforts to develop this land for a regional shopping facility. This wonderful and rare waterfront parcel suggests itself as an ideal opportunity for large scale residential development consistent with the high demands for new residential development in our community.

Transportation needs, particularly contract resurfacing, total reconstruction and scheduled repair of the roads within the Board area, present an ever increasing task. Much of the existing street system in the southern portion of the Board area was constructed by builders more than forty (40) years ago. Canarsie and surrounding communities were built on landfill that is rapidly deteriorating requiring an aggressive street and sewer reconstructive program. The Community Board urges the Department of Transportation to advance many of the Board project requests.

Transportation issues persist to rank high on the problem list for our Community Board. Many of the intersections within our Board area are the source of continued concern. The intersections around the Kings Plaza Shopping Center, and the congested junction of the "Home Depot" shopping center on Avenue U at East 57 Street, present special challenges and are only a few examples of Board requests for pedestrian/vehicular traffic safety solutions to this Agency. A coordinated effort must be made to implement the suggestions of the studies already made and not initiate new studies.

Kings Plaza Shopping Center, built on city-owned property and leased by the parent company of Kings Plaza Shopping Center, Vornado Realty, is the cause of constant consternation. Numerous costly and time consuming studies have been performed by outside consultants, the Departments of Transportation and City Planning, and the Borough President's Office, in an effort to improve pedestrian, vehicular, and bus circulation problems at the intersections and along Flatbush Avenue and Avenue U. These studies continue to identify the same problems and continue to propose a myriad of improvements including changes in bus stop locations and operations, directional signage, street configuration, and the installation of

C.B.#18 - STATEMENT OF NEEDS AND PRIORITIES - FISCAL YEAR 2007

pedestrian safety fencing along Avenue U -- *To date . . . nothing of consequence has been done, except for the movement of bus lanes on Flatbush Avenue and Avenue U that will only create additional confusion and further bottleneck the intersection, and the erection of huge directional signs above Flatbush Avenue indicating the entrances to the Belt Parkway and the direction to the Manhattan Bridge!*

All the studies performed . . . All the dollars spent . . . All the changes suggested . . . All the promises made . . . All the time wasted -- *To date . . . nothing of consequence has been done.* It is the opinion of the Community Board that the money should not continually be spent on costly studies that include costly city personnel time and manpower, but rather on identified improvements.

This year, after another repetitious pedestrian/vehicular traffic study identifying the same problems and offering the same solutions, we were given the same answers -- there is no money in the budget to implement the changes. But, as far as the promised pedestrian fencing along Avenue U -- D.O.T. informed us that..."After careful review, analysis, and application of the Department's pedestrian fencing policy, the Department has determined that pedestrian fencing is not warranted at this location. Thank you for your interest in traffic safety." Needless to say -- *To date . . . nothing of consequence has been done to improve the unsafe conditions!*

Without community input or knowledge, the local Congressional Delegation authorized the National Parks Service to enter into a long-term arrangement to concession large portions of Floyd Bennett Field for a "mega" recreational facility. By virtue of Federal Jurisdiction, they are immunized from impact studies concerning pedestrian/vehicular traffic and city infrastructure. This mammoth facility will clearly impact our neighborhoods as well as many other neighborhoods in Brooklyn and Queens, and our already overburdened and stretched-to-the-limit Police and Fire Departments who would be called upon, in emergencies, as "first responders."

We are optimistic that funds will be increased to establish an even greater emergency service presence for the improvement of service delivery to reduce crime, battle fires, and enhance quality of life conditions within our Community Board area.

Fire protection in a residential community, comprising tens of thousands of frame dwellings, is obviously of paramount concern. The basis used by the Department for "manning" decisions includes statistics that *do not* include literally thousands of homes and tens of thousands of area residents that have become part of the Board area since that information was compiled. Consequently, analysis of the Department's decision should be the subject of review.

The day-to-day "line" contact with the two area Police Precinct Commanding Officers from the 63rd and 69th Precincts, with active participation by the Police Department at the Community Council level, has further improved community relations. Special praise must be given to our Borough Chief, Joseph Fox, his local Commanders, Deputy Inspector Kevin McGinn, 63rd Precinct, and Captain Ralph Monteforte, 69th Precinct, who work closely with the community and make prudent command decisions in police utilization.

C.B.#18 - STATEMENT OF NEEDS AND PRIORITIES - FISCAL YEAR 2007

Our Community Board, together with the area Police Commanders, have identified specific areas of concern to improve the quality of life for our area residents. A rise in the number of "hate crimes" is deeply distressing. Efforts continue to be made, such as our recent Unity Day in Marine Park as well as interaction through identifiable organizations within the community, to address these scattered incidents. It was mutually agreed that special attention must continue to be given to the rampant "double parking" that plagues our streets, in general, and the "Kings Plaza" shopping area, schools, and places of worship, in particular.

The proliferation of illegal "dollar" vans must be aggressively addressed by enforcement agencies particularly at and around the Kings Plaza Shopping Center. Stronger enforcement with severe penalties for operation of licensed, unlicensed, and "renegade" dollar vans is encouraged. We ask the Administration to cease their efforts to encourage van usage. We look forward to working together to bring this obnoxious blight on our communities under control.

We continue to urge upgrading and renovation of the 69th Precinct Stationhouse. The need for a new 63rd Precinct Stationhouse continues to be a documented necessity. Although the Department allocates funds for rehabilitation of the antiquated Stationhouse to meet staffing needs and patrol requirements, the poor conditions and problems still exist. Funding must be set aside for relocation. Modern, adequately sized police precincts are essential to good policing. We urge the N.Y.P.D. to aggressively explore the acquisition of city-owned properties so that this aging facility can be replaced economically and expeditiously. The Board strongly recommended the use of the undeveloped city-owned property adjacent to the Construction Site for the future D.E.P. Paerdegat Basin Water Quality CSO Facility at Bergen and Ralph Avenues, and/or the N.Y.C.T.A. Bus Loop property, currently used as a parking lot for employees, at Utica Avenue and Avenue N. ***To date . . . we have still not received a response to these proposals, or given a viable alternative!***

Special recognition should be given to the very active and effective Precinct Community Councils that service our two local precincts for the support and cooperation that they render to the Department and the entire community. The Auxiliary Police continue to play a vital role in the day-to-day operations of both Precincts. We strongly urge that the Police Department enhance their support of these vital groups of community volunteers.

We urge that the M.T.A. develop a long-term strategy for meeting the public transportation needs of our area residents.

We continue to ask for attention to, and relief from, the constant parking, double/triple parking of idling buses outside the Flatbush Bus Depot, 4901-23 Avenue O, on Fillmore Avenue and continuing along Flatbush Avenue. The buses regularly block the street and the Flatbush Avenue entrance/exit to the adjacent Floridian Diner. They create hazardous pedestrian, vehicular, and environmental conditions. The T.A.'s lack of cooperation and action underscores their unwillingness to work with the community, City and State Agencies, and our elected officials.

Our thanks to the State Department of Environmental Conservation for their dedication, commitment, and tireless efforts in monitoring this offense as well as the ongoing diesel fuel oil spill clean-up operation for compliance, and for their generous spirit of cooperation with the community to answer concerns and provide information.

C.B.#18 - STATEMENT OF NEEDS AND PRIORITIES - FISCAL YEAR 2007

We also remain frustrated in our efforts to provide adequate public transportation to other parts of the Borough due to the lack of speed, curtailed, changed, and/or eliminated service on the surface lines. The speed can be easily improved by strict enforcement of regulations prohibiting the use of illegal "Dollar" vans on the bus routes along Flatbush Avenue. Fares continue to rise, service continues to deteriorate, equipment becomes antiquated, and no light appears on the horizon.

The maintenance and upkeep of our parks and playgrounds continues to remain a major area of concern due to inadequate staffing. Many of the parks and playgrounds in our District are in various stages of design, scope and reconstruction. The Board fully supports the continued funding of these projects. Several of our smaller parks and playgrounds require reconstruction or "in-house" spruce-up. We urge that these projects and increased staffing be promptly addressed through either Capital funds or the internal Agency Expense Budget.

The implementation of the Greenstreets Program provided us with an opportunity to beautify our barren neighborhood triangles and traffic islands. We wholeheartedly support and commend the continuation of this program. We encourage strategies for additional conservation and beautification programs to include sorely needed maintenance provisions.

Parks' Department equipment and personnel are always needed and in short supply; we urge that our requests, as well as the Departmental requests, be given a high priority in budget negotiations. The park areas of Community Board #18 provide recreational and cultural outlets for all ages, and are truly a valued natural resource that must be protected and maintained. Marine and Seaview Parks are regional facilities; coupled with Gateway National Park they serve an area much larger than our local neighborhoods.

Department budgeting has historically impacted the Forestry Division of the Department of Parks & Recreation and continue to cause great consternation for the residents of our community. The large geographic area of our Community Board and its residential neighborhoods are the "home" to the largest street tree population in the Borough. Consequently, we must cope with a Parks' Division that, year after year, falls behind in its pruning and dead tree/stump removal schedules. We are hopeful that additional funds will be allocated to this greatly needed, yet poorly funded, division.

We support the efforts of the National Park Service to implement a pilot marsh restoration project encompassing approximately two (2) acres of Big Egg Marsh with the Jamaica Bay Wildlife Refuge, a component of the Gateway National Recreation Area. It is well documented by various scientific investigations that the tidal marshes that occur in Jamaica Bay are disappearing at an unprecedented rate -- as much as three percent (3%) per year since 1994.

The water pollution problems of Jamaica Bay must be given close attention. Jamaica Bay and its inlets are under the jurisdiction of the National Park Service, Gateway National Recreational Area. The Bay, as well as the adjacent wetlands and creeks, is of deep interest to a number of conservation groups and environmentalists as well as many organizations within our area. We continue to stress the aggressive pursuit, by the Administration, to bring Jamaica Bay water quality to levels that would meet and, hopefully, exceed Federal standards for recreational use.

C.B.#18 - STATEMENT OF NEEDS AND PRIORITIES - FISCAL YEAR 2007

More than ten (10) years ago, a firm commitment was in place by the Department of Environmental Protection to upgrade the Pumping Station at Paerdegat Basin and build a six-million gallon underground retention tank to hold the overflow until the Knapp Street Sewage Treatment Plant could properly process the sewage. Originally the project was due to be completed in 2003. Then the date was pushed back to 2005, and then to 2009, and finally to 2011. After three different administrations and half a dozen commissioners, the Paerdegat Basin Project is no closer to completion than it was a decade ago. This project, coupled with "in-line" retention, is an engineering solution to the current pollution problems that continue to plague the Basin.

Sanitation Commissioner, John Doherty, brought a life-time of experience to the job. We urge the administration to listen more closely to his advise and suggestions, and implement many of the management suggestions he has proposed. Most particularly, give him the manpower necessary to do the job. The supervisory staff of BK 18 has been exemplary in their willingness to work with the Board in developing the maximum potential of their limited manpower and antiquated equipment to deliver quality service. Increased manpower is needed to maintain the center malls along our roadways. They become a community nuisance and safety hazard. Neglected and unattended they grow into breeding grounds for vermin and illegal dumping.

Increased staffing for the Department of Buildings is critical. Code enforcement personnel are a crucial component in enforcing the Zoning Resolutions and Building Codes. Unchecked greed and neglect will lead to gross abuse in many instances, and dangerous code violations in some instances.

The Board continues to develop broad outreach programs within the community and direct its attention to the needs of our area youth. We are currently working with our local elected officials, community and youth organizations, in securing funds for special programs designated to address identified youth problems.

The State Legislature has given the Mayor broad authority in running the retooled Board of Education as the Department of Education. Reading and math scores reflect a distorted picture of the crisis in our local schools. Fancy slogans such as "no child left behind" and "children first" become the advertising campaign of a failed system. We urge the Mayor to examine the direction that public education is going and recognize the role of the teacher and the need for parental involvement as the first line of defense in providing a sound basic education. That formula puts "children" first rather than "control" first.

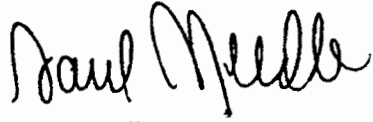
Agencies such as the NYC Department of Cultural Affairs and the New York City Human Rights Commission are urged and invited to participate with our Board in bringing their message into the community. It is our intention to support further efforts to bring cultural and educational programs into our Community Board area.

The Charter has broadened the mandate and responsibilities for Community Boards as a grass-roots vehicle to deliver services to the community, as well as act as a citizen ombudsman. We continue to make a major impact in implementing our Charter obligations. We look toward the continued support of the city administration and the combined efforts of our elected officials as key ingredients in restoring these funds so that we may be even more responsive in addressing

C.B.#18 - STATEMENT OF NEEDS AND PRIORITIES - FISCAL YEAR 2007

the needs of our community. The partnership that has developed between government and community is best exemplified by our Statement of Needs and Priorities for Fiscal Year 2007 -- a true product of that joint cooperation.

Respectfully submitted,



Saul Needle
Chairperson



Dorothy Turano
District Manager